

**RENEWAL MONITOR**

**TFT LCD COLOR WIDE SCREEN MONITOR**

**INSTRUCTION MANUAL**



*Instruction Manual*

Thank for your purchasing **THE REARVIEW MIRROR TFT LCD COLOR WIDE SCREEN MONITOR.**

This product adopts international new integrate circuit and employs the high quality TFT & TFD modules. It is putting out with its low power consumption, stable quality, without X-ray radiation and other advantage characteristics. The TFT LCD color rearview mirror monitor is the most suitable display for backing car system, car VCD and GPS system for motorcars and ships. This product is shaped with modern style and is easy to be carried with. You would have great enjoyment of high quality product.

To insure the best use of the unit, please read this handbook carefully beforehand.

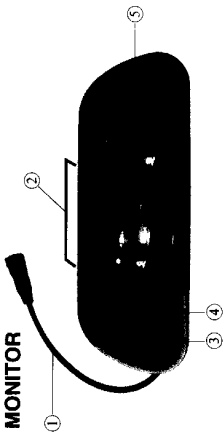
1. Please call a qualified technician to install the machine.
2. Do not remove the rear panel of this product. If in need of service please call a qualified technician.
3. Keep off strong light while using this product so as to obtain the clearest and the most colorful picture.
4. Avoid heavy impact or drop onto the ground.
5. Do not use chemical solutions to clean this unit. Please simply wipe with a clean soft cloth to keep the brightness of the surface.
6. Don't expose this product to direct sunlight, heat or humid conditions.

|                   |                             |                             |
|-------------------|-----------------------------|-----------------------------|
| Display screen    | TFT LCD 4.5" (114mm)        | TFT LCD 5" (127mm)          |
| Resolutions       | 224640 pixels               | 224640 pixels               |
| Color system      | PAL/NTSC                    | PAL/NTSC                    |
| Input voltage     | DC 11-13V                   | DC 11-13V                   |
| Power consumption | 9.5W                        | 9.5W                        |
| Dimension         | 248(L) × 88(W) × 30(H) (mm) | 248(L) × 88(W) × 30(H) (mm) |
| Weight            | 433g                        | 433g                        |

The unit has special functions of picture up/down and left/right reversal, with double A/V input, special input jack for camcorder (AV2 is the forcible trigger for backing the car. When the car enter the state of backing the car, it can trigger to open the machine and display the image rearview. If the machine is at the state of opening. It can enter the state of AV2 rearview for backing car. In addition, It has a indicator light used to reminding if the car door is closed.

Remote controller: 1 piece  
 A/V cable: 1 piece  
 Operation manual: 1 piece

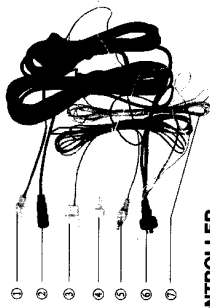
## 1. THE MONITOR



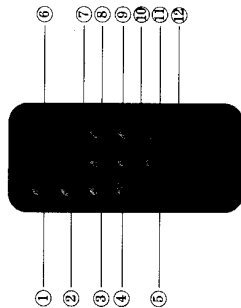
- ① Signal input cable with nine poles jack for video control signal and power supply.
- ② Installation bracket
- ③ POW (Power standby/On switch)
- ④ A/V switch: to select the video signal
- ⑤ Liquid crystal display

## 2. A/V CABLE:

- ① Power input plug: (White wire connect to the pole "+" of car power supply; Black wire connect to the pole "-" of car power supply or connect to the ground.)
- ② Video signal input jack connect to camera.
- ③ Red cable use to input the signal of backing car.
- ④ Orange cable connect to the indication light of monitor.
- ⑤ Yellow RCA signal input connect to the video output jack of car
- ⑥ Nine poles plug: connect to the nine poles jack of monitor.
- ⑦ The black wire can be earthed or hung in the air.



### 3. REMOTE CONTROLLER



- ① Mute
- ② Mode
- ③ A/V Switch
- ④ ◀ (in OSD Menu)
- ⑤ No Use
- ⑥ Power Switch
- ⑦ Select "▲"
- ⑧ L/R Switch
- ⑨ ▶ (in OSD Menu)
- ⑩ Menu
- ⑪ Picture
- ⑫ Select "▼"

When installing the machine, put the fixed agraffe of the monitor clasp the top of car original rearview mirror, then fix the bottom with the active agraffe of the monitor, plug the nine poles jack of the video cable equipped into the nine poles jack of the video cable on the products and check if it is plugged properly. Then connect the input

signal of the video cable equipped to the respective signal (Yellow: Video input, connecting to the video output of DVD on the car; White signal cable: connecting to signal of indicator light; power input jack is connecting to car power output; Red signal cable: connecting to signal output of backing car; Signal input jack of the camcorder: connecting to the video output of the camcorder; Pink signal cable: should to be connected to ironwork) please check carefully before testing.

**Attention:** the input voltage of the monitor should be between DC11V - 13V. Ensure to use output power is bigger than 12W, or it will not work properly!

### 1. POWER ON /OFF/ STANDBY

After connecting the power, the monitor will be at standby state. Press "POW" button of the unit or "POW" button of the remote controller, the monitor begins to work, press the same buttons again, the monitor will return to its standby state.

When the monitor is at the state of standby, if backing the car (putting into gear), the monitor will enter into the rearview monitor state(AV2). It will return to its standby state after finishing backing the car.

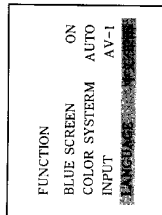
### 2. AV SWITCH

The monitor has two special input ports for video signal and signal for camcorder. You can connect two video signals. When the machine is used as the car rearview monitor, please connect the signal input port of the camcorder to the video output of the rearview camcorder, at the moment the car enter into the backing state, the machine will enter into the state of opening the machine forcibly and rearview monitor. The machine will return to its standby state after finishing

backing the car. Changing your using state, you can use the "AV" button or "AV" button on the remote control to switch from "AV1" to "AV2", that makes the signal you use to work in your unit.

### 3. CHINESE / ENGLISH MENU

Press "MENU" button on the remote controller to select the function menu. Press "▲" or "▼" button on select the LANGUAGE, then you can select the Chinese/English menu by pressing "◀" or "▶" button on the remote controller (see diagram on the right).

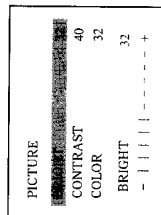


### 4. THE IMAGE CONTROL

Turn on the machine, you can adjust the brightness, contrast and color according to your personal favorite.

#### 4.1 MENU

Press the "Menu" button on the unit itself, there will appear "Brightness", "Color" and "contrast" on the screen, then press the related button and subsequently press "-" or "+" to choose the ideal brightness, contrast, and color.



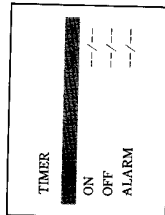
#### 4.2 REMOTE CONTROLLER

You can also use the remote-controller to set each analog. First press the "MENU" on the remote controller until it appears the "PICTURE" menu, then choose the one needed to be adjusted in the menu by using "▲" or "▼", the related character

will turn red, then you can adjust the brightness, contrast, and color by pressing "◀" or "▶" (see the diagram on the right). For "picture mode", just press "PICTURE" button on the remote controller to attain the "standard", "soft" or "rich" and other auto setting.

### 5. TIMER

The machine has the functions of "TIME ON", "TIME OFF", "ALARM". In order to carry out the function of timer, press "MENU" button on the remote controller to select the "TIMER" menu, press "▲/▼" button to select the "TIME" (the



character will turn red), press "◀" or "▶" keys to set the initial time (see the diagram on the right). Entering the menu of the "TIME", you may set the time "ON" or time "OFF" by pushing the "▲/▼" buttons (the character will turn red) and then press "◀/▶" buttons to set the time to carry out the function of time "ON" or time "OFF". The set is also designed to remind you automatically of the time set by yourself. You can first set the initial time by yourself as per your requirements. Choose the "ALARM" to set the alarm time by pressing "◀/▶" buttons. The set will automatically display the blue screen and the current time after the timer is finished. You can master the time while you appreciate the program.